

# Installation guide



## M2k, Structural Design Suite

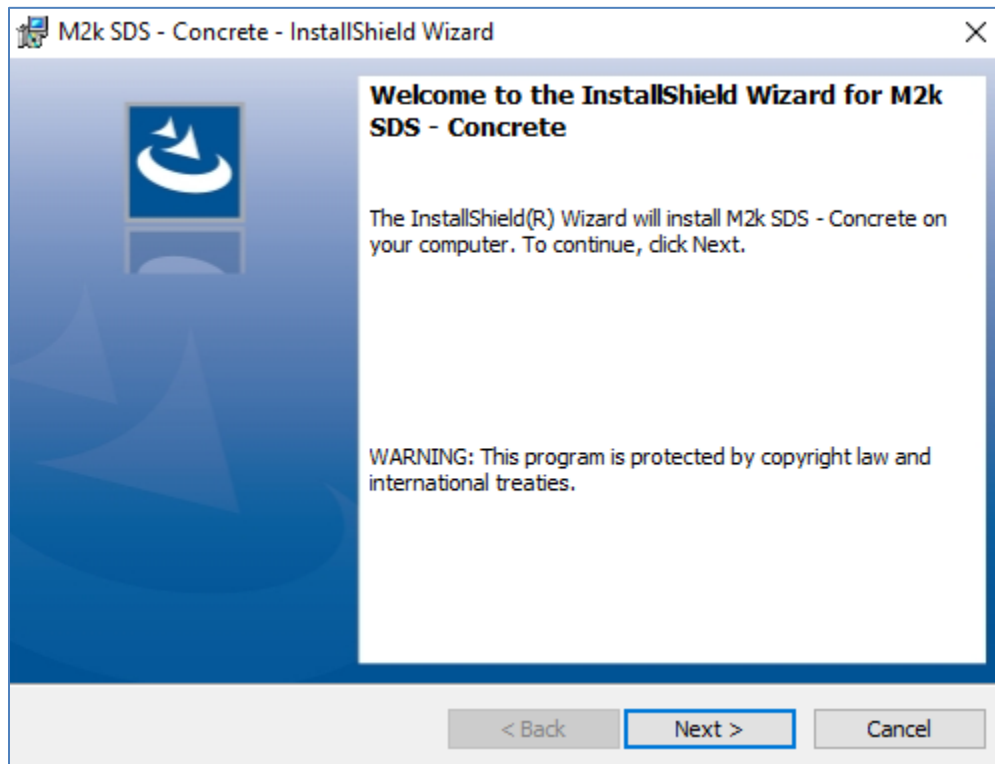
### System requirements

- Computer: IBM<sup>®</sup> PC or compatible.
- Operating system: Windows 7<sup>®</sup> (64 bit), Windows 8<sup>®</sup> (64 bit), Windows 10<sup>®</sup> (64 bit).
- Processor: 2 GHz (or better) 64-bit processor.
- RAM: 4GB (or better).
- Display (resolution): 1366x768 (or better).
- Hard drive: approx. 100 MB required for installation.
- Microsoft .Net Framework 2.0<sup>®</sup> (or better).

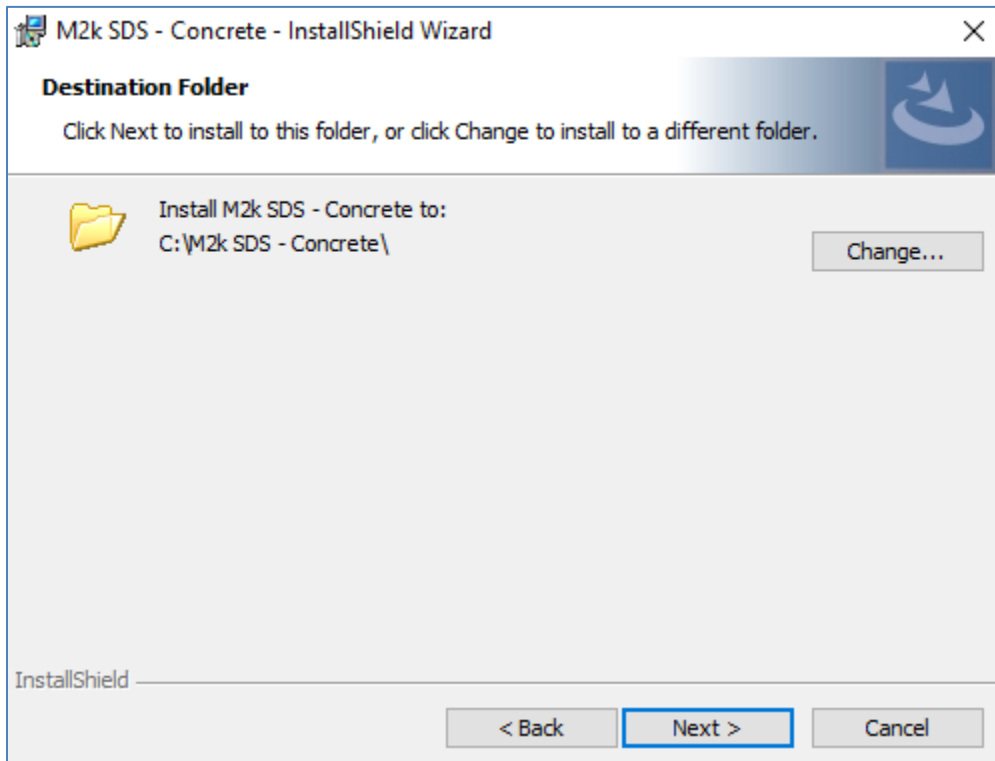
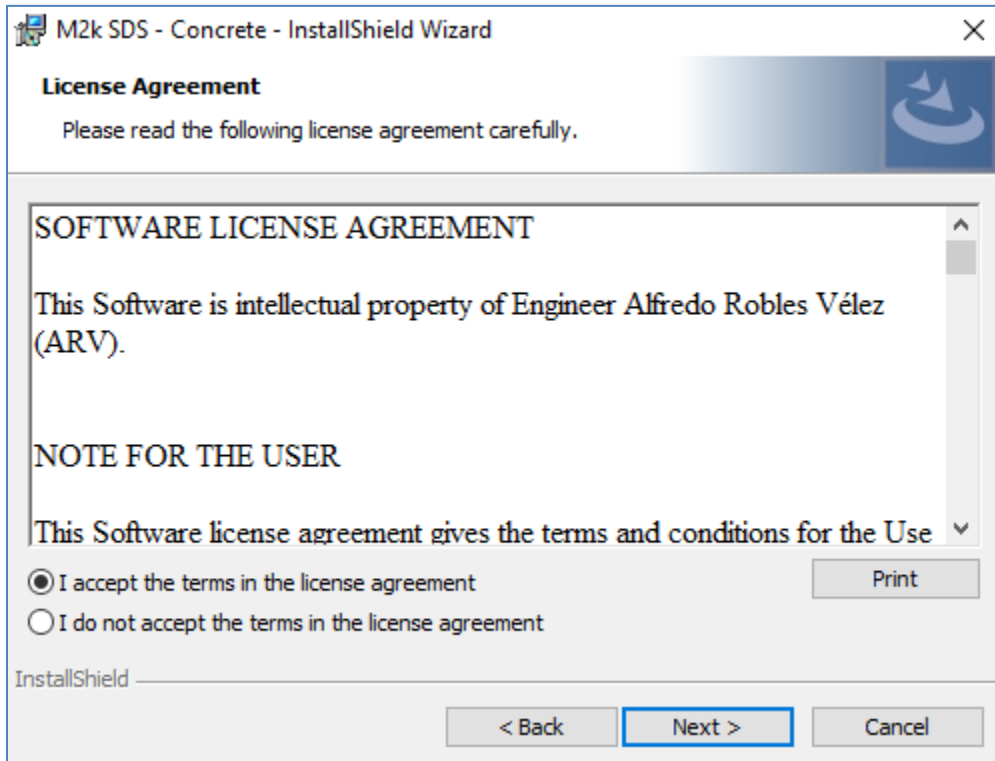
Note: In some regions “comma” symbol is used to separate decimal numbers instead of “point” symbol. For M2k to work correctly, it is necessary that numbers format configuration in Windows<sup>®</sup> is compatible with regions in which “point” symbol is used to separate decimal numbers.

## Software installation

Step 1: open file \*.zip and execute setup.exe

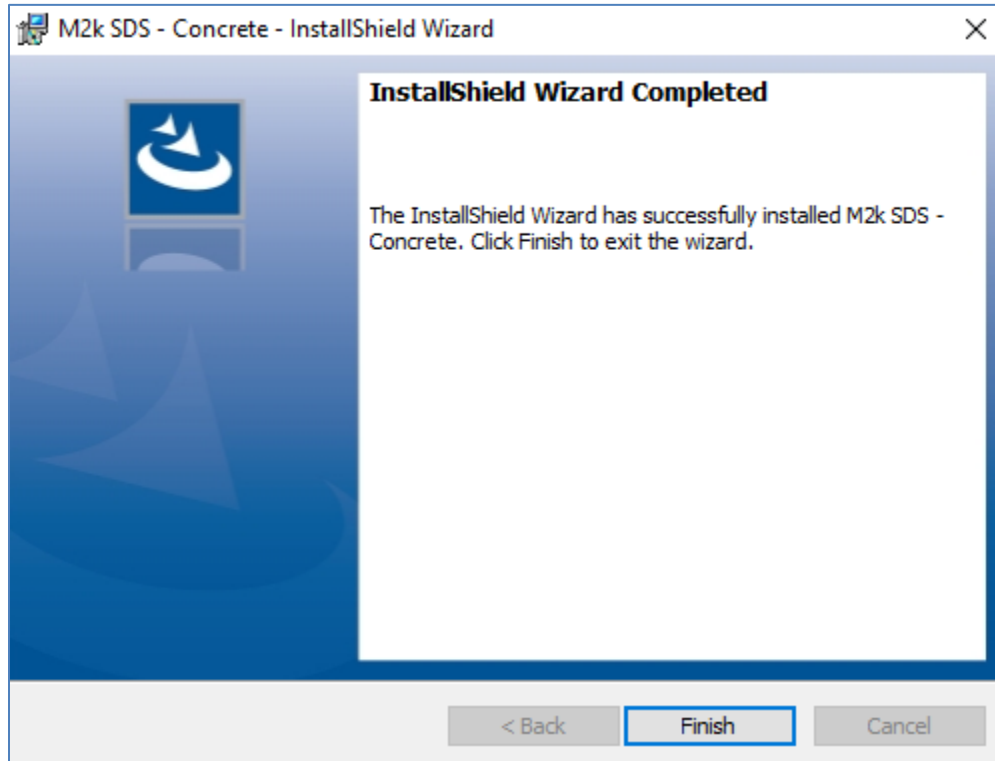


Step 2: follow indications on screen



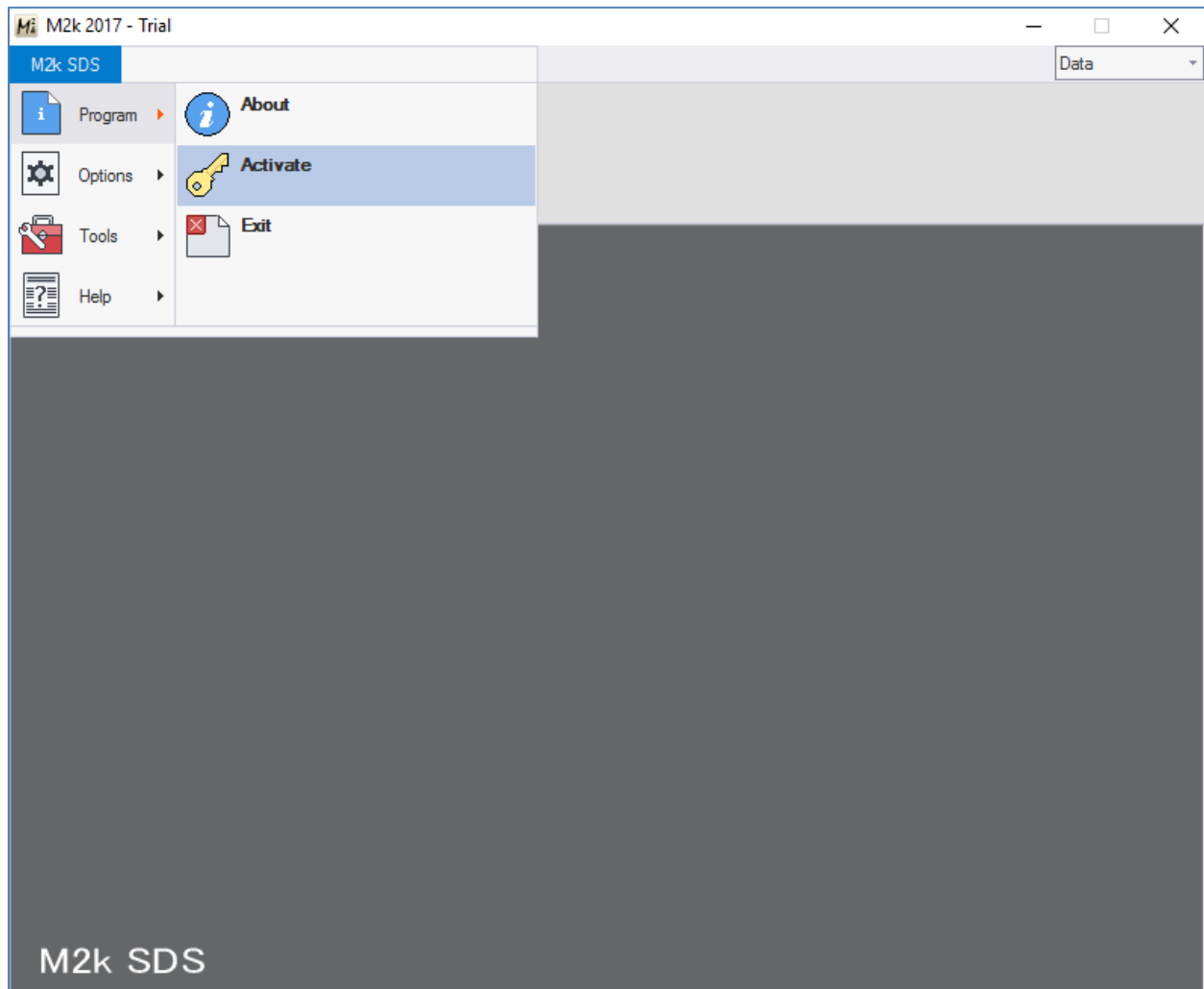
Note: if you wish to change install folder, it is necessary to ensure that folders and/or installation files have complete access for reading and/or editing.

Step 3: Complete installation

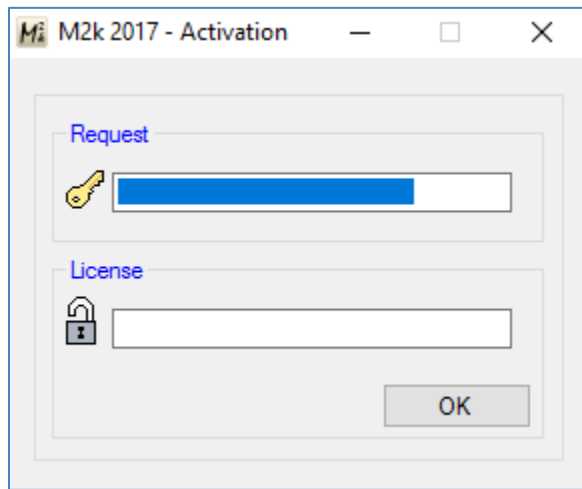


## Software activation

Step 1: Execute software and go to Program → Activate



Step 2: Write down Request activation number (i.e. 123-4567-8901-2345)



Step 3: Send an e-mail to Sales department along with Request activation number

Note: during this process client personal data will be verified (client identification number, name, address, telephone, etc.)

Step 4: Once identification process has finished, an e-mail will be returned with activation code (i.e. XXX-XXXX-XXXX-XXXX)

Step 5: Copy activation code to License box and press OK button

Step 6: Restart software